



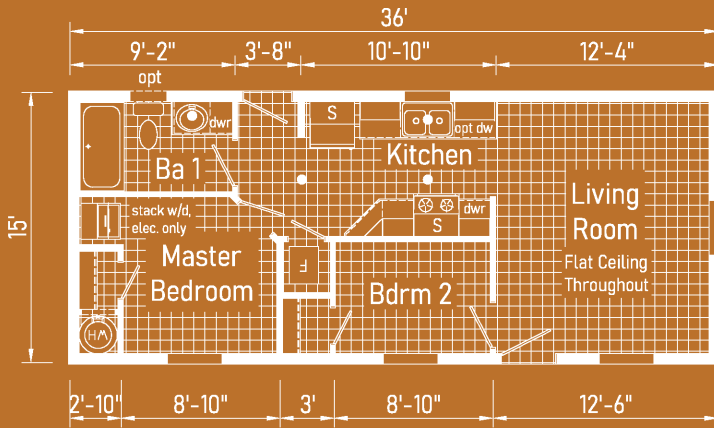
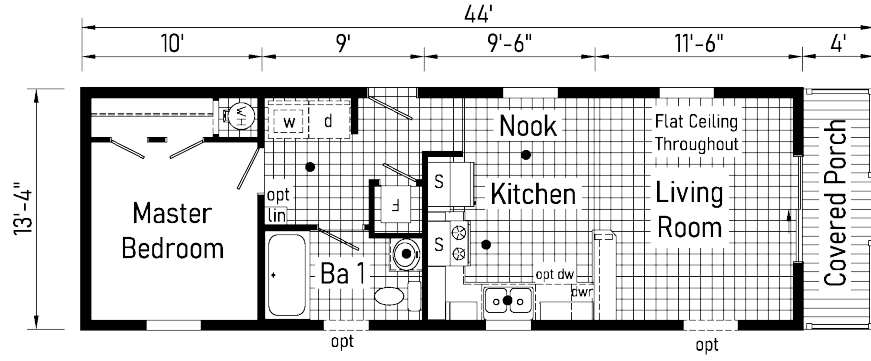
# Bungalow

*Astro*



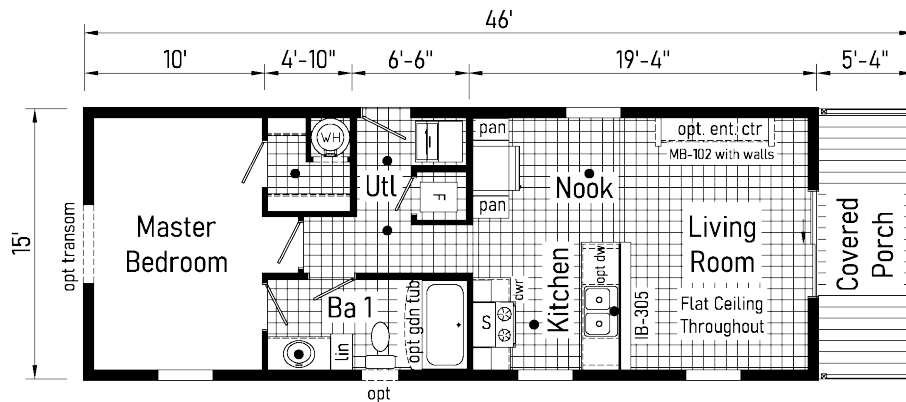
Commodore Homes  
PENNSYLVANIA

**1A2601P**  
 533 Sq. Ft.  
 1444



**1A2602V**  
 540 Sq. Ft.  
 1636

**1A2604V**  
 607 Sq. Ft.  
 1646



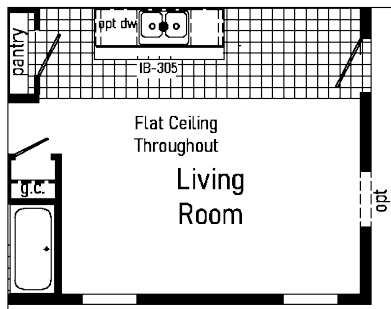
\*\*This cabinet color has been discontinued



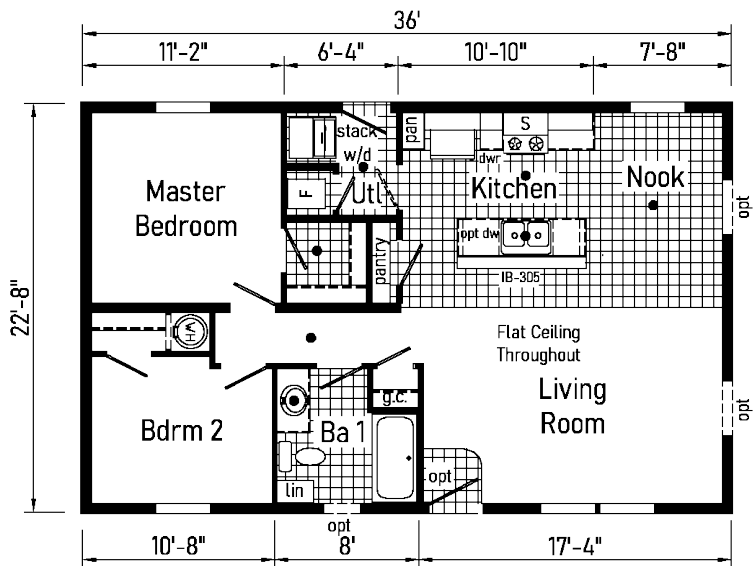
Scan to  
Watch  
Video!

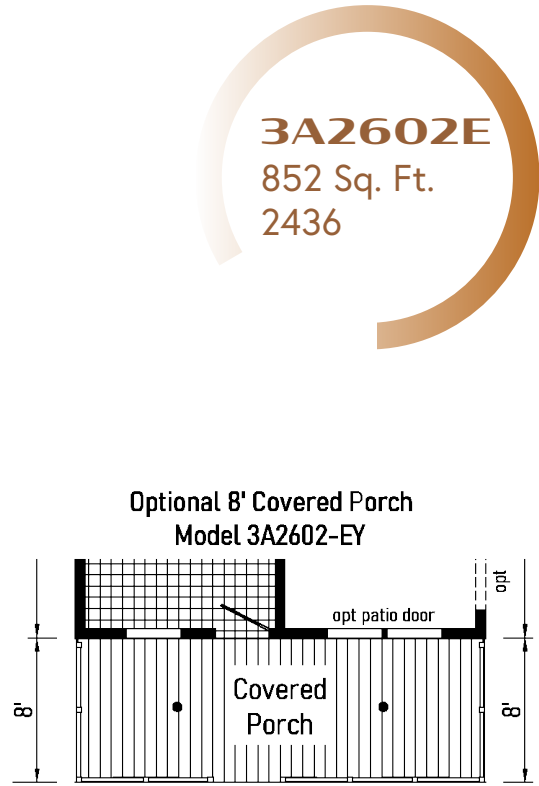
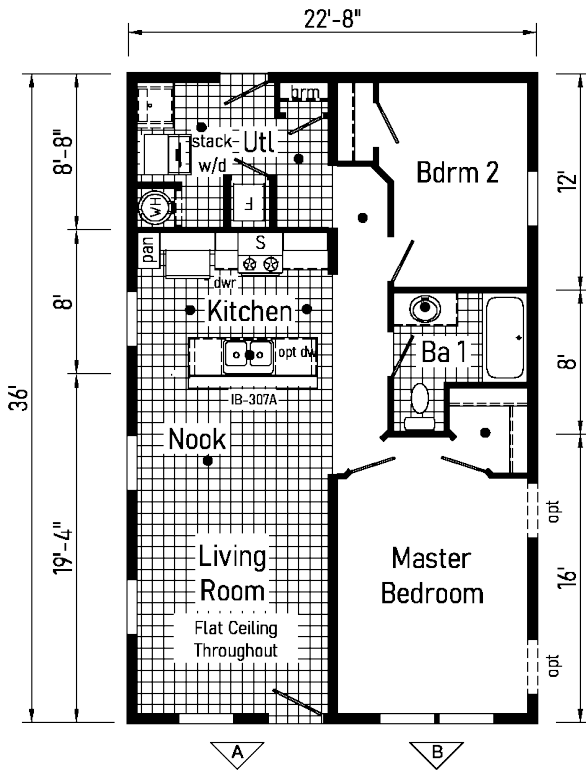


**3A2601E**  
852 Sq. Ft.  
2436

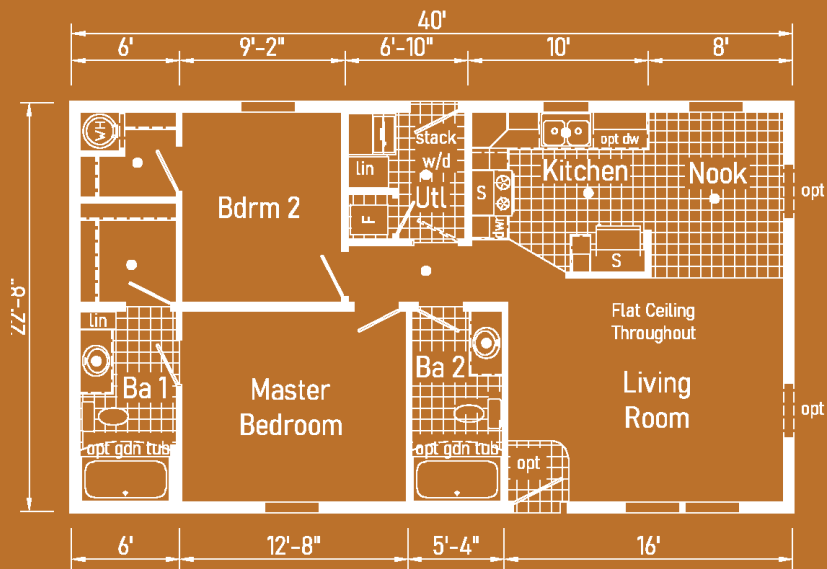


Alternate End Entry





**3A2604E**  
907 Sq. Ft.  
2440

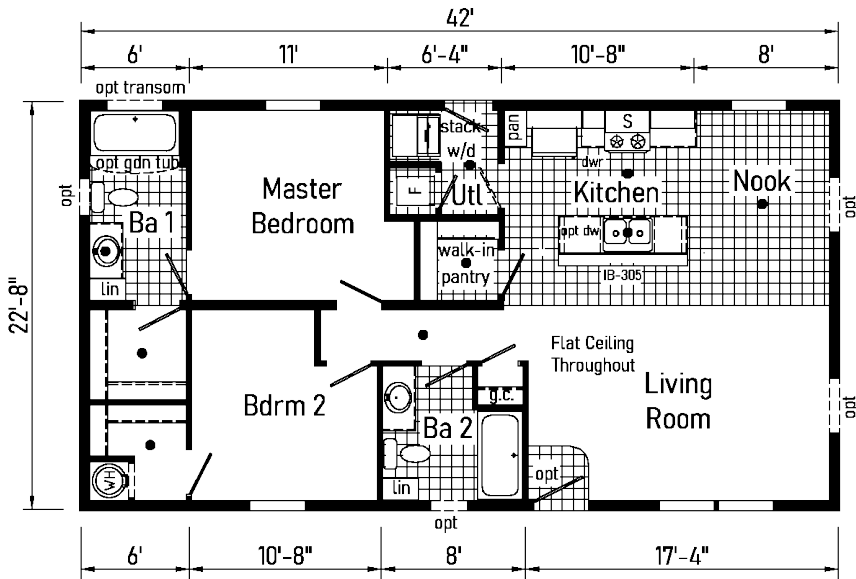




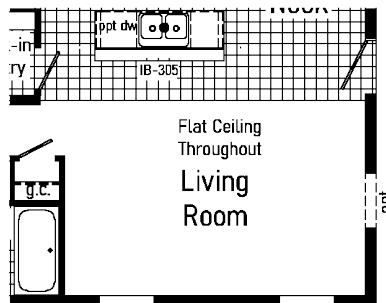
\*Please use pictures for floorplan vision only. Decors and materials used are constantly changed and improved.



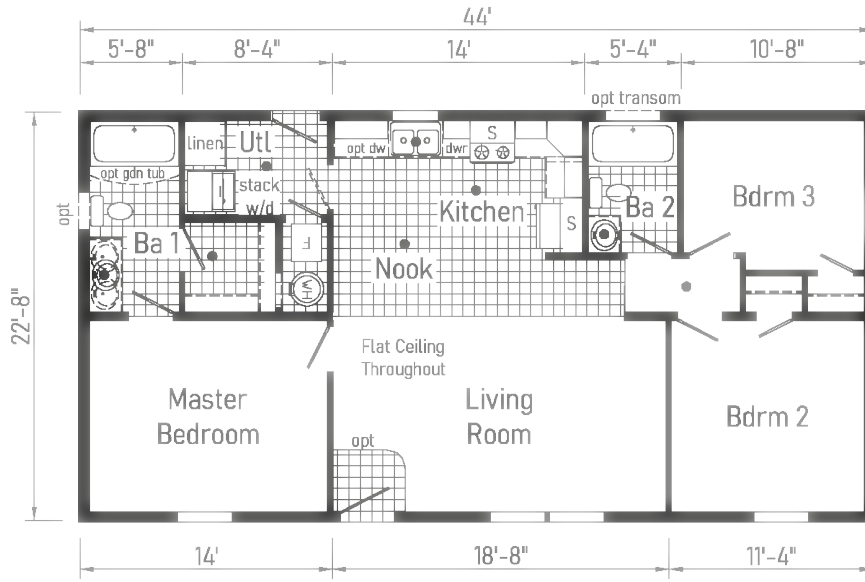
\*\*This cabinet color has been discontinued



**3A2606E**  
 952 Sq. Ft.  
 2442

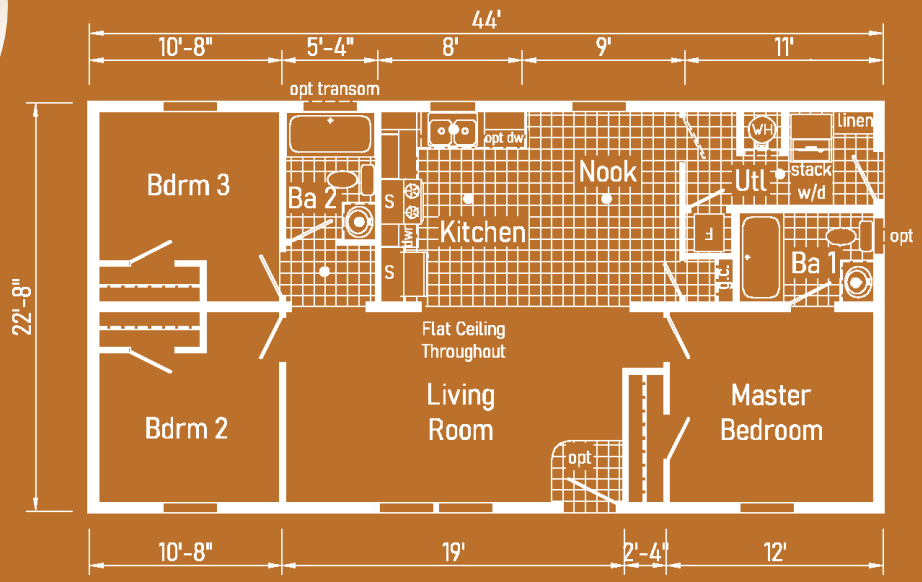


Alternate End Entry



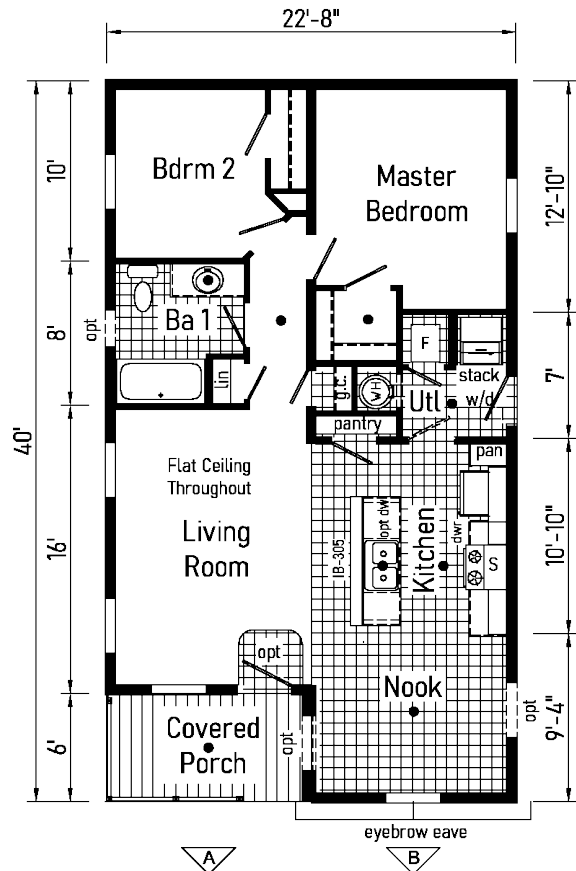
**3A2607E**  
 997 Sq. Ft.  
 2444

**3A2608E**  
 997 Sq. Ft.  
 2444





\*\*This cabinet color has been discontinued



**3A2609E**  
839 Sq. Ft.  
2440



Scan to  
Watch  
Video!

# Bungalow

Astro



Commodore Homes  
PENNSYLVANIA

20898 Paint Blvd  
Shipperville, PA 16254  
(814) 226-9210

[www.commodore-pa.com](http://www.commodore-pa.com)

Your Independent Retailer is:



[www.commodore-pa.com/inhouse-experience](http://www.commodore-pa.com/inhouse-experience)



CONNECT WITH US:



Your purchase contract, including options, is with your retailer who is an independent contractor, not our agent, and who is responsible totally for any alterations, exchanges, additions or attachments made in or to your home.

All descriptive representations of the products on this brochure are believed to be correct at the time of publication. However, due to continued product improvement and changes in suppliers, design and production, accuracy cannot be guaranteed. Therefore, equipment, colors, material specifications, prices and model availability are subject to change without notice. All information and images contained in this brochure are property of Commodore Homes and for the use by active dealers of the company only. © 8/23